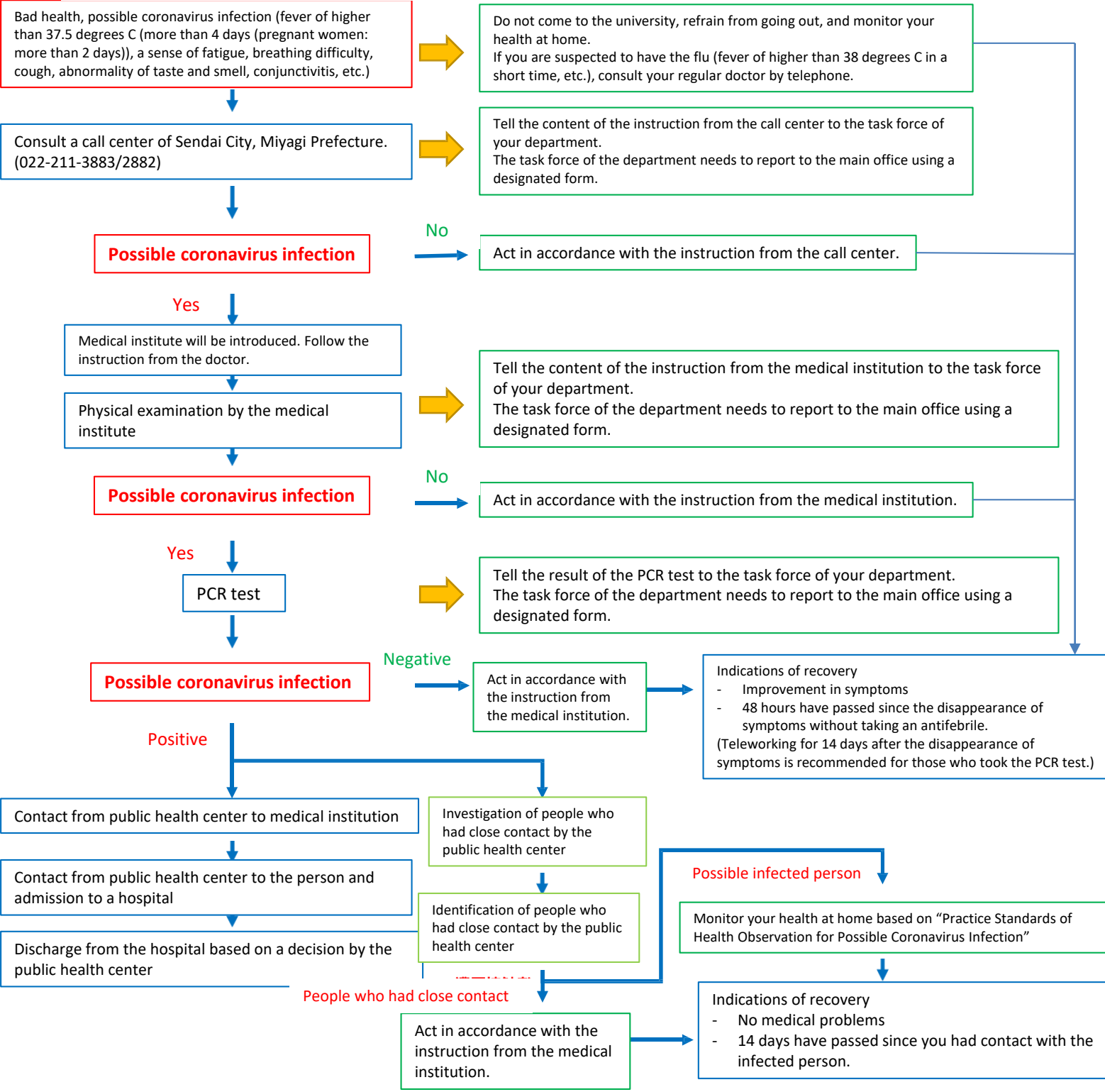


Flowchart for Infection Control of New Coronavirus (Responses to People in Poor Physical Condition etc.)



Practice Standards of Health Observation for Possible Coronavirus Infection
 If you correspond to any of the following situations, please monitor your health at home.

- When you may have had close contact with the infected person
- When you stayed in the same space (room) on the same day with the infected person for more than 15 minutes (If it was a closed space, you must monitor your health at home even if the staying time was less than 15 minutes.)
- When you stayed in the same building on the same day with the infected person for less than 15 minutes and used shared goods
- When you stayed in the same space (room) on or after the same day with the infected person for less than 15 minutes and used shared goods

Definitions
 Close contact: To touch something without any necessary precautions against infection, or the case where you had face-to face contact within arm's reach of each other (about 1 meter) for more than 15 minutes
 Shared goods: PC, table, sofa, pot, refrigerator, remote controller, etc.